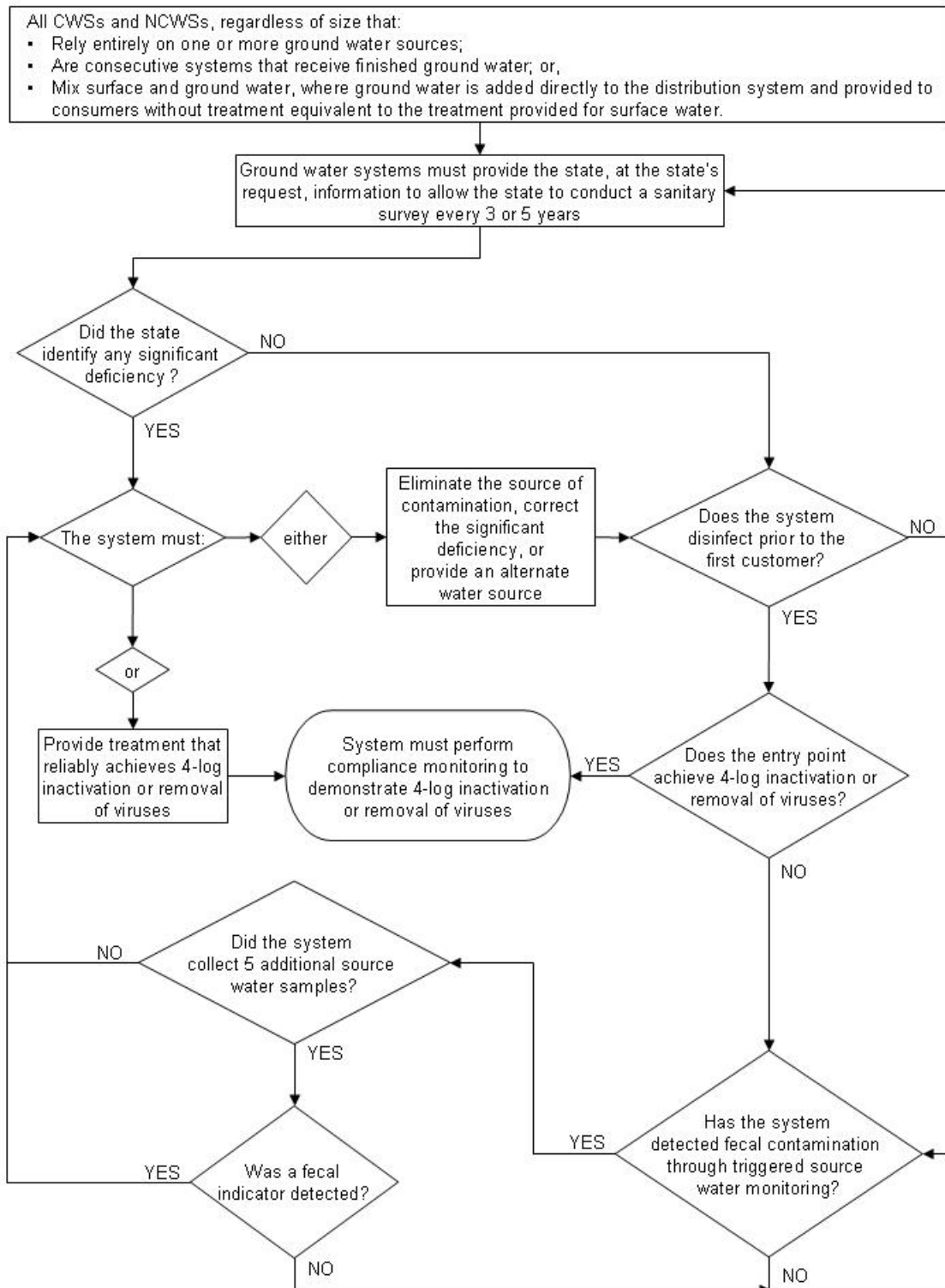
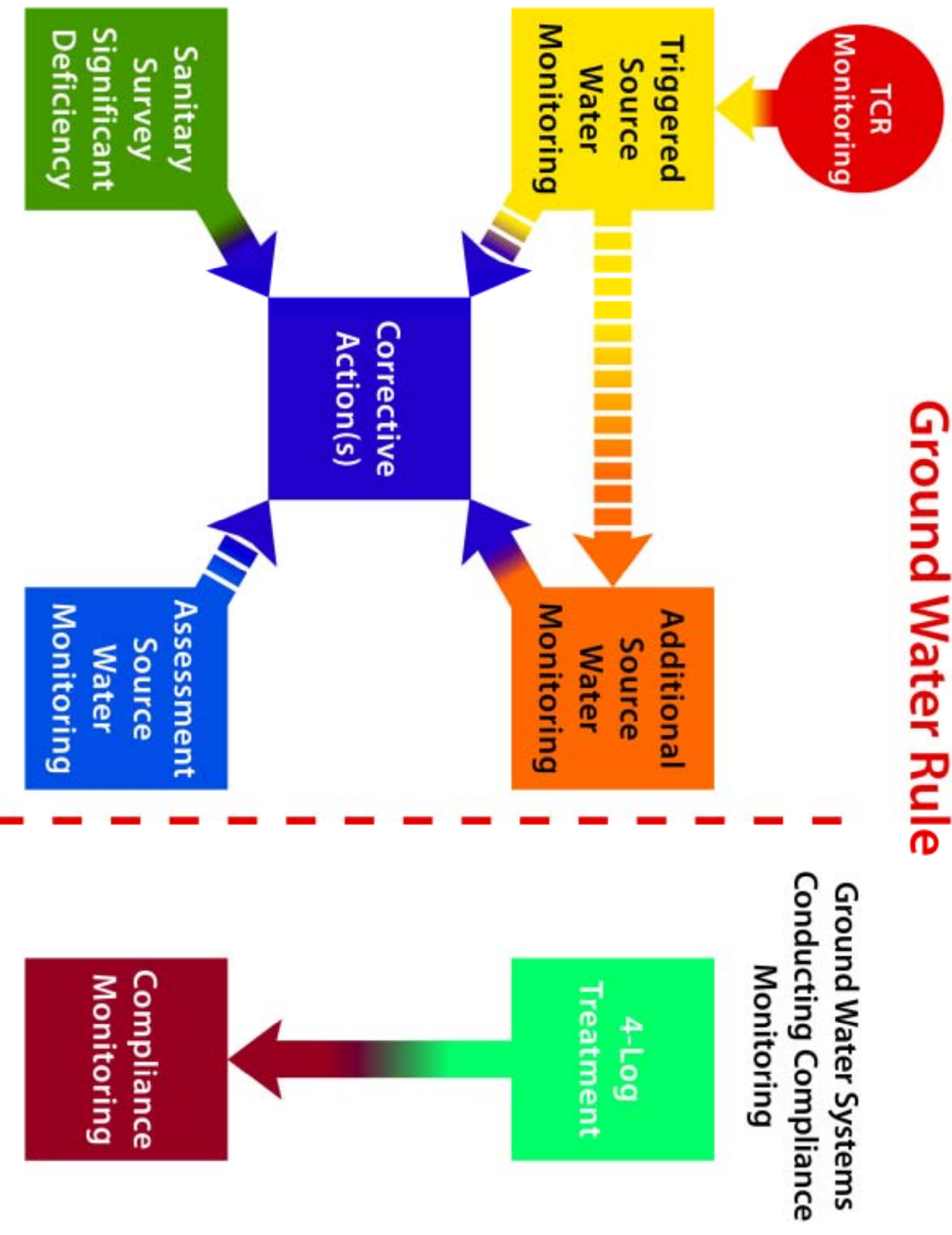


Figure 1-1. Ground Water Rule Requirements

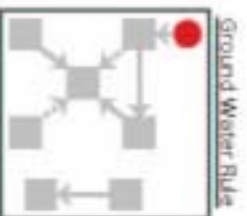


Ground Water Rule



START

Total
Coliform Rule
monitoring



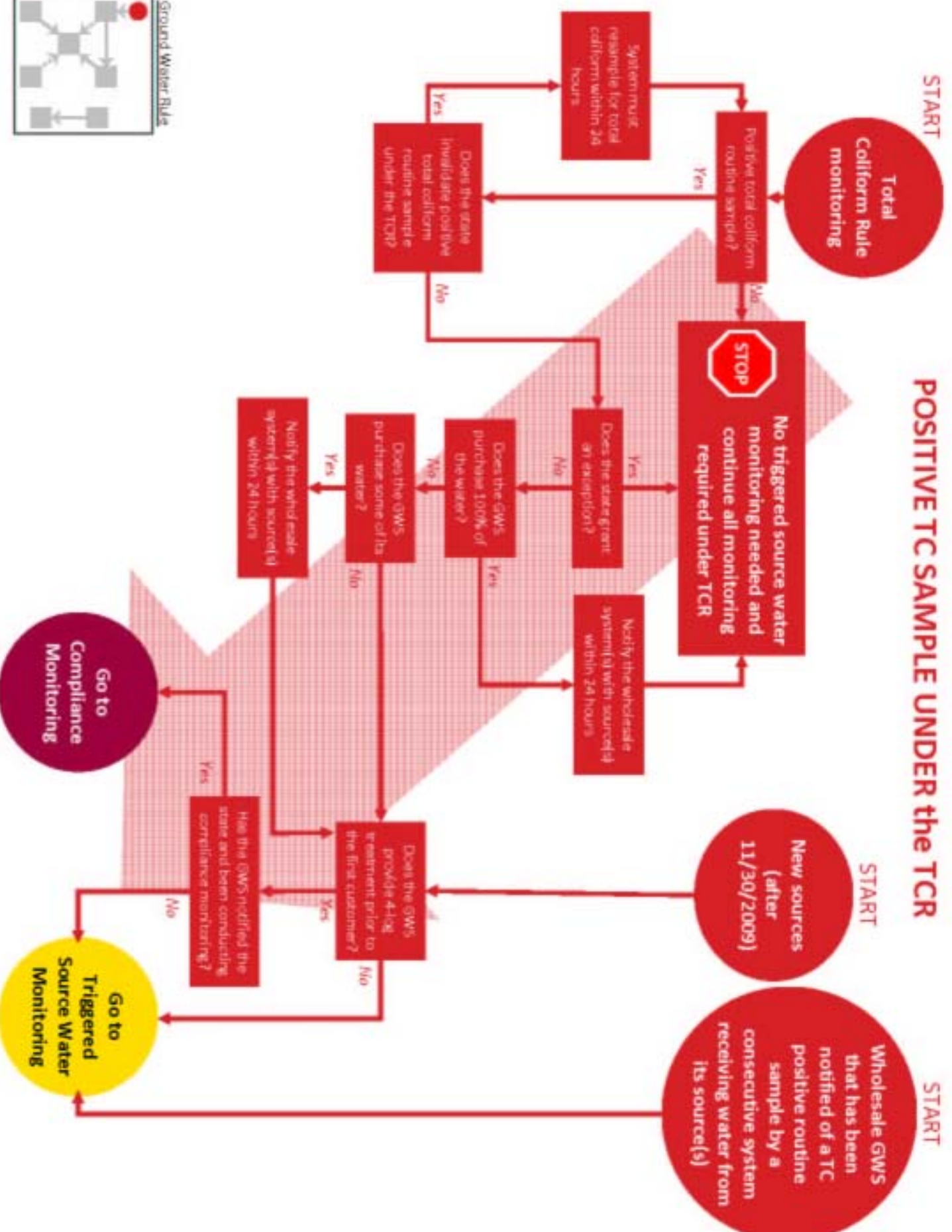
POSITIVE TC SAMPLE UNDER the TCR

START

New sources
(after
11/30/2009)

START

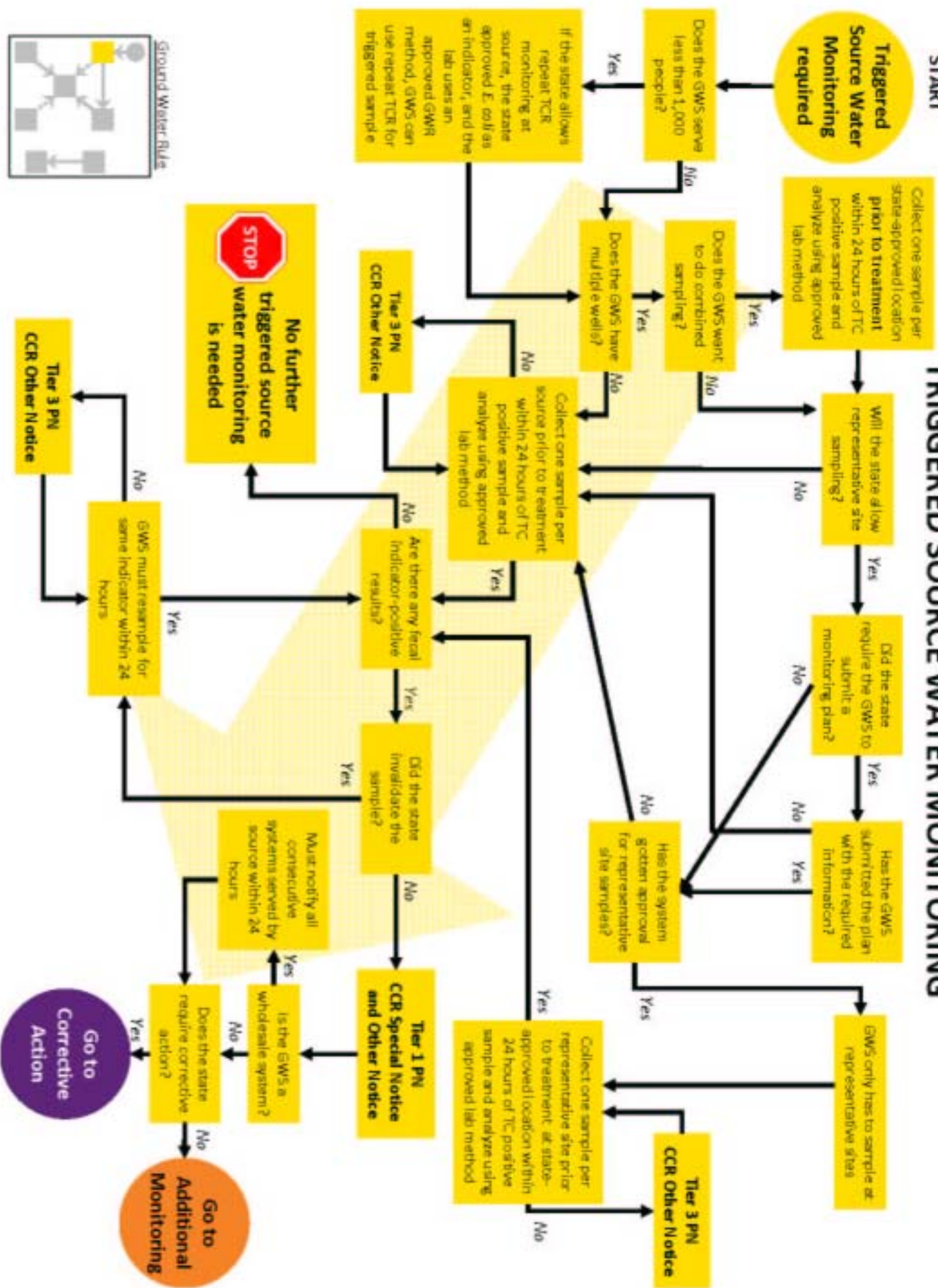
Wholesale GWS
that has been
notified of a TC
positive routine
sample by a
consecutive system
receiving water from
its source(s)



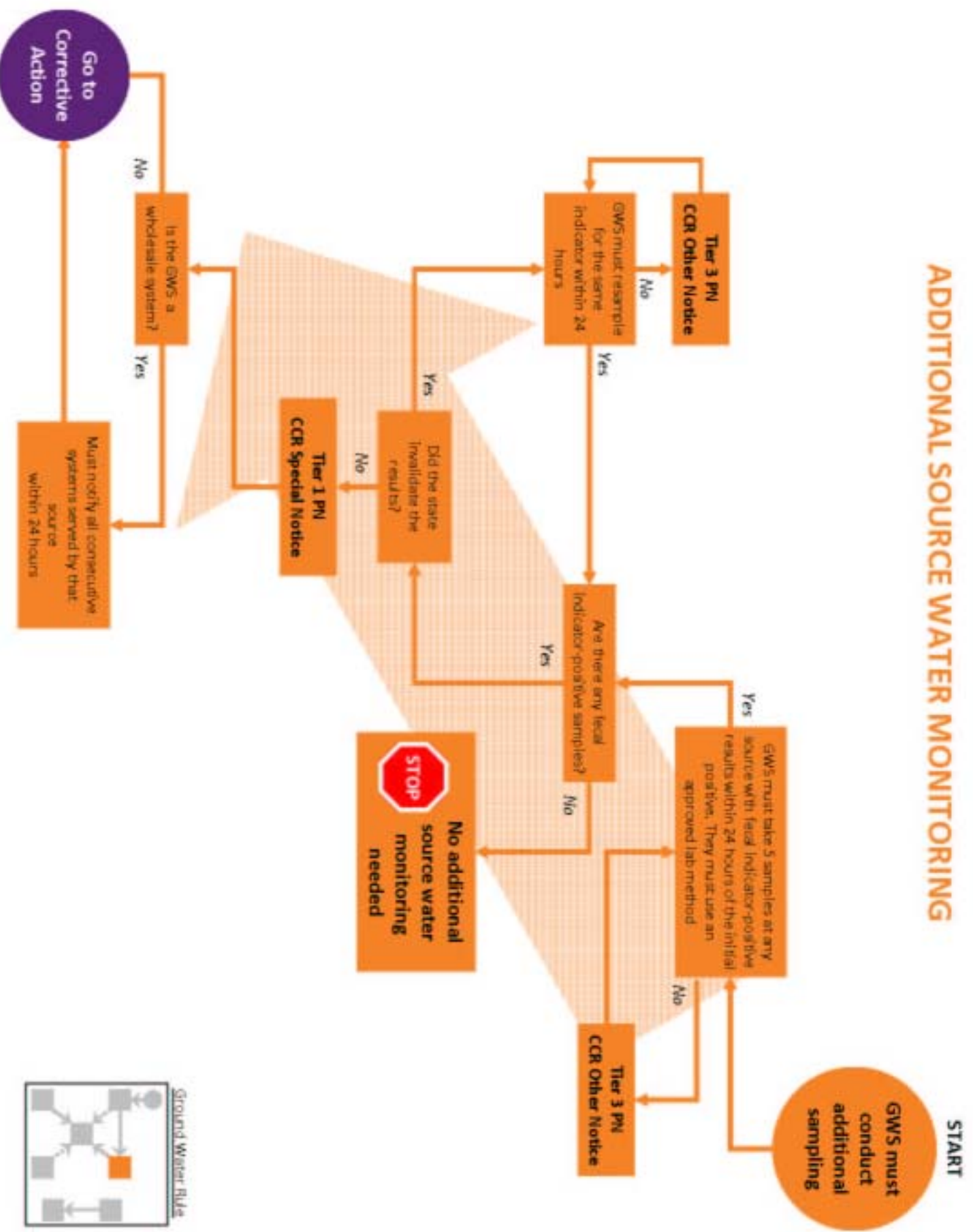
START

Triggered Source Water Monitoring required

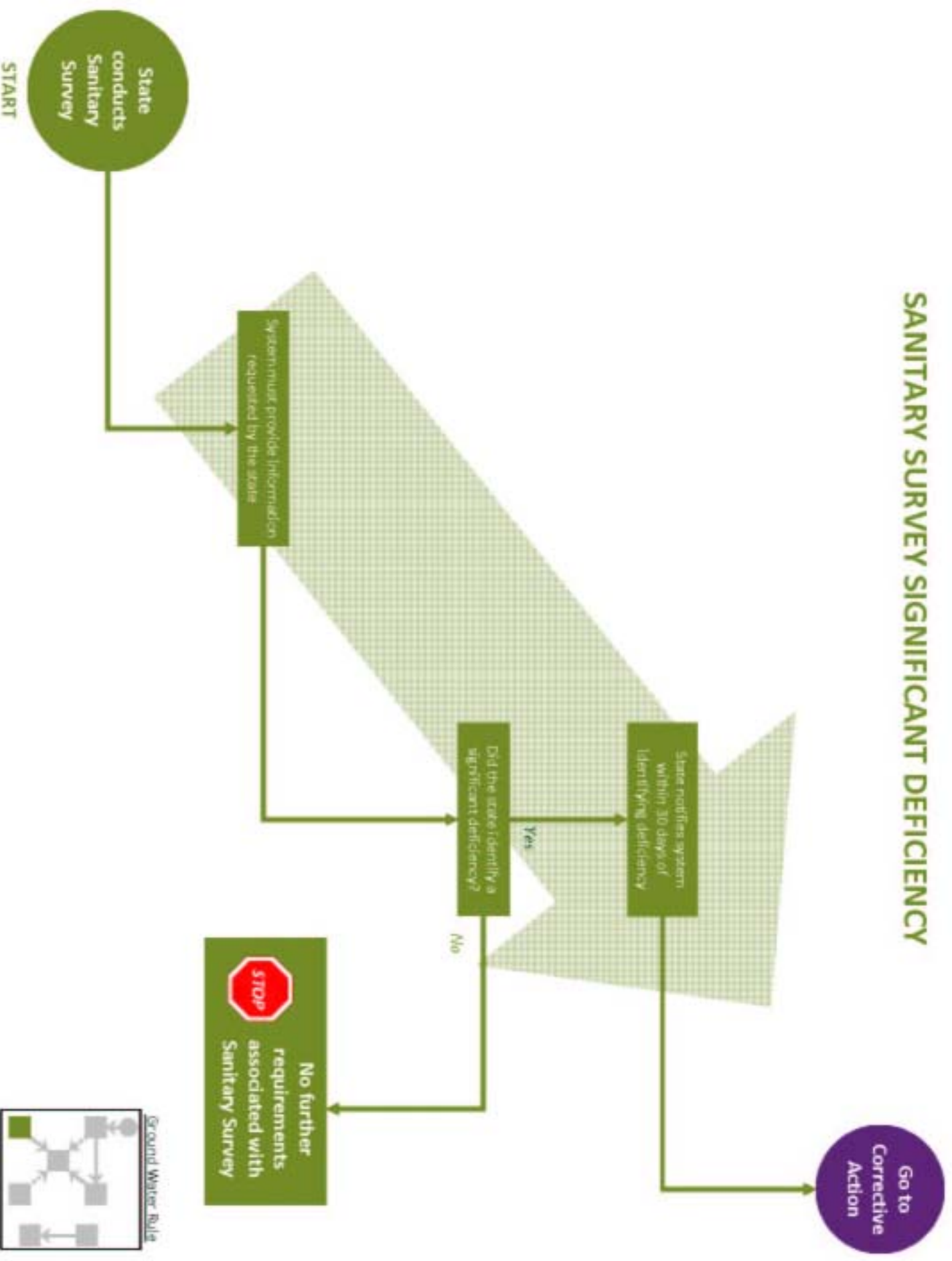
TRIGGERED SOURCE WATER MONITORING



ADDITIONAL SOURCE WATER MONITORING



SANITARY SURVEY SIGNIFICANT DEFICIENCY



ASSESSMENT SOURCE WATER MONITORING

Go to
Corrective
Action

Does the state
require corrective
action?

STOP
No additional
assessment
source water
monitoring needed

Does the state require more
assessment monitoring?

**Tier 1 PN
CCR Special Notice**

Is GWS a wholesale
system?

Must notify all
consecutive systems
served by source
within 24 hours

Did the state
invalidate sample?

Were any samples local
indicator positive?

Conduct monitoring
as required by state

**Tier 3 PN
CCR Other Notice**

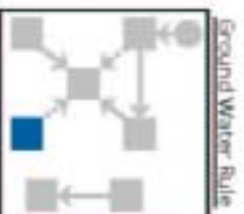
GWS must resample for
the same indicator
within 24 hours

**Tier 3 PN
CCR Other Notice**

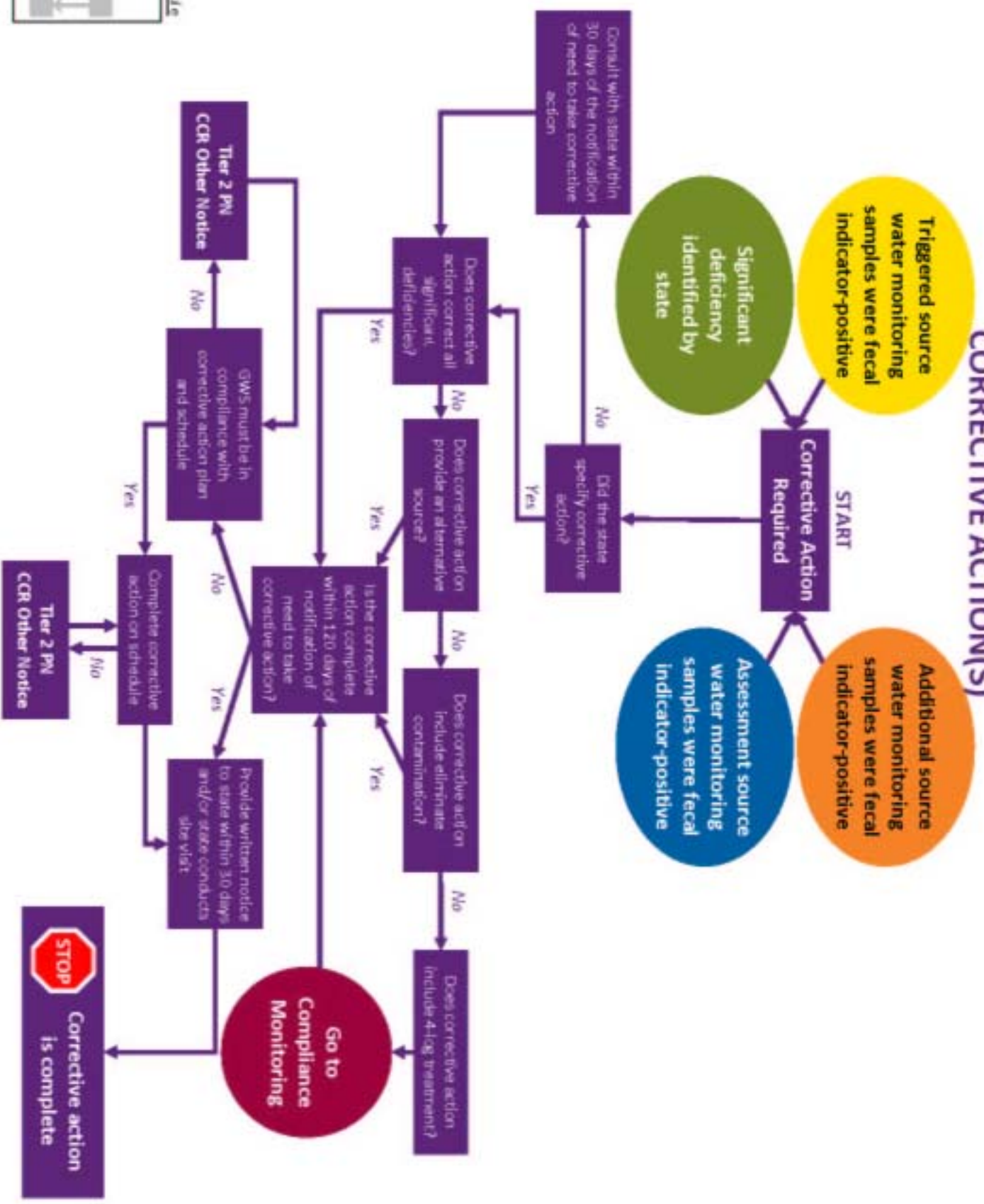
If system also required to do
triggered source water monitoring,
GWS can use assessment monitoring
to meet those requirements

State requires
assessment
source water
monitoring

START



CORRECTIVE ACTION(S)



COMPLIANCE MONITORING

START

Is GWS required to conduct or choosing to conduct Compliance Monitoring?

Tier 2 PW
CCR Other Notice

The system must take daily grab samples at the state-approved location during the hour of peak flow or another state-approved time.

Does the GWS monitor continuously for residual?

Does the GWS serve fewer than 3,300 people?

Does GWS chemically disinfect?

Does the GWS use membrane filtration?

The GWS must meet state requirements for alternative treatment

Is the grab sample above the state minimum residual?

Yes

No

The GWS must take grab samples every 4 hours until concentration is restored to the required state level

Did the GWS monitor the disinfectant concentration continuously, recording the lowest daily value?

Yes

No

Did the equipment fail?

Yes

No

Grab sample every 4 hours and fix equipment within 14 days

Did the system maintain the state-approved minimum residual?

Yes

No

Restore the state approved minimum residual within four hours

Tier 2 PW
CCR Other Notice

The GWS must meet state requirements for membrane filtration.

Does the system want to discontinue treatment?

Yes

No

Does the state approve?

Yes

No

Continue compliance monitoring

Go to Triggered Source Water Monitoring

